

# Jane Maclean

www.JaneMaclean.com

Spring 2007

## What has been happening in the studio?

Many of you have been on Jane Maclean's mailing list over recent years. This publication is a way for Jane to reach out to invite you to see where she has been, and where she is heading.

## MasterWorks of New Mexico 2007



*Tea with Catherine*

22" x 18" Pastel

*Tea with Catherine* by Jane Maclean celebrates a tradition that is common around the world... **tea and conversation.**

In this painting the delicate handmade nesting dolls portray the image and stories of Russia. The Lomonosov tea cup is in the style of Catherine The Great. Texture, sheen, shadow and light are central parts of this story.

*Tea with Catherine* will be on display in the ninth annual show of MasterWorks of New Mexico in the Hispanic Arts Bldg., Expo NM, Albuquerque, NM.

The opening reception is 5-8 PM Friday, March 30, 2007. The show continues until 5 PM Friday, April 27. Admission to MasterWorks is free. The show is closed on Mondays and Easter Sunday. For more information see the MasterWorks web site —

[www.Masterworksnm.org](http://www.Masterworksnm.org)

## Calendar of events

[MasterWorks of New Mexico](#)

March 30 to April 27, 2007

[Vintage Albuquerque](#)

June 20 to June 23, 2007

## Historical Still Life Painting Wins Coveted Award

*Blending Many Traditions to Form a Union* won second place in the Still Life and Floral division of **The Pastel Journal's Pastel 100 Competition**. There were over 4000 entries from the United States and abroad in this competition. Jane's story and her painting are featured in a full page article of the April 2007 issue of **The Pastel Journal**, which is now in the news stands and book stores. This image is one of three of her historical still life paintings that permanently hang in the rotunda of the Sandoval County Judicial Complex in Bernalillo, New Mexico.



*Blending Many Traditions to Form a Union*

30" x 38" Pastel

*In September 2006 a Power Point presentation was given for the Pastel Society of New Mexico at The Albuquerque Museum, detailing the process of creating this public art. The information was set against the background of the building going up and the paintings being created.*

## Local Galleries

**Charlevoix Street Gallery**  
2113 Charlevoix Street NW,  
Old Town Albuquerque, New Mexico  
(505) 242-2787

**Rose's Pottery House**  
925 Camino del Pueblo  
Bernalillo, New Mexico  
(Next to The Range Cafe—Closed Mondays)  
(505) 867-2338

## Inviting Realism

Over time, Jane's paintings, which she calls inviting realism, have developed into images that can be viewed on different levels. Very simply they can be seen as compositions that include a variety of textures, forms, shadows and light. They can also be understood as documenting history, since many of her paintings feature authentic, historical objects. For those who enjoy stories, there are personal narratives associated with each painting. Jane invites the viewer to find his own.

*They can also be understood as documenting history, since many of her paintings feature authentic, historical objects.*

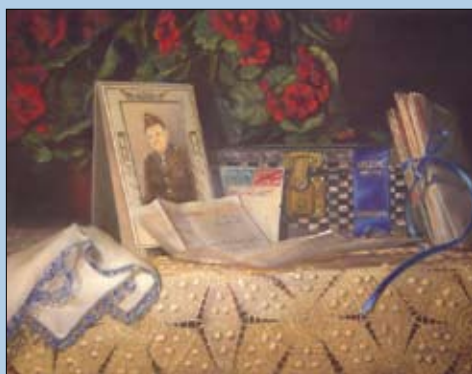
*Vintage Albuquerque*, which is a four-evening event at the end of June, benefits the New Mexico Symphony's program, Music in the Schools. For two years Jane has participated in the final evening's Live Auction and Dinner held at the Prairie Star Restaurant. She plans to be part of the event for 2007. Under a soaring tent overlooking the Sandia Mountains, an elegant dinner is served during an exciting live auction of rare wine lots, unique wine excursions, and wonderful art. Fourteen invited artists participated in the 2006 live auction. ***Sonata Number One*** was Jane's painting for 2006. This still life displays a Russian musical theme set in the Southwest. The subject features Prokofiev's Sonata Number One for Violin and Piano. Watch her website for the 2007 entry. For more information about this event, contact the symphony office (505) 881-9590

## Vintage Albuquerque 2006



***Sonata Number One*** 24" x 21" Pastel

## The Signature Show The Albuquerque Museum



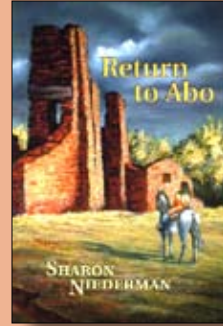
***The Answered Prayer*** 18" x 24" Pastel

***The Answered Prayer*** was selected to be part of **The Signature Show** at The Albuquerque Museum in 2006. This show was available to the public from July through October. For this painting a theme of World War II was chosen. The story in the image is that of a young soldier going off to war. In 1944 he writes home to his mother, even as his troop train heads to the Pacific. His news is ordinary, but filled with details that he wants to share, and his mom wants to hear. From the painting you can read the date and some of the descriptive words of one of his letters. The title of the painting comes from the blue satin ribbon that is part of the composition. It is a Welcome Home ribbon presented to the soldier in 1946 by his home town.

## Cover Art

Jane has enjoyed producing paintings that have been used as cover art for published books.

A novel, *Return to Abo*, by Sharon Niederman has an image that wraps around the cover. It is a view of the ruins of Abo, a historic mission about 80 miles south of Albuquerque, NM. The atmosphere is that of a threatening storm at sunset.



*A New View of the Moon* is on the cover of a scientific book, which was published by the Mineralogical Society of America and released in fall 2006. The scene is a moonlit night in northern New Mexico, viewing the moon as if our eyes could see with gamma rays, instead of visible light. The book, which is written by a number of lunar and planetary scientists, is a comprehensive collection of some of the latest information about the moon.

## Availability

Research, study and planning are the starting point for most of these paintings. Using pastels or oils, the creative process itself can take from weeks to months. Layers of pigment are patiently applied until the textures and sheens emerge, and forms are defined. Since this process results in a limited number of original paintings available, Jane offers archival quality reproductions of her works.

e-mail: [magic@janemaclean.com](mailto:magic@janemaclean.com)